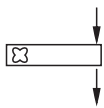
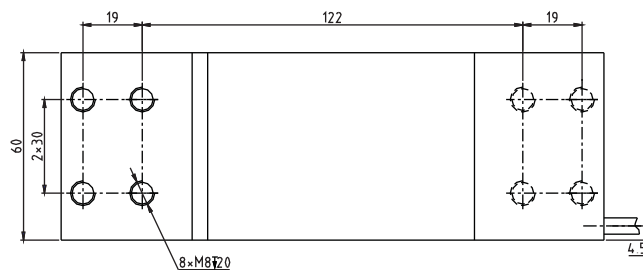
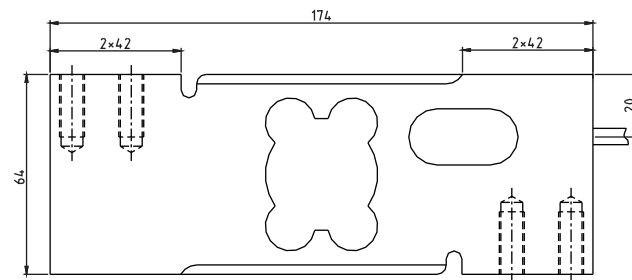
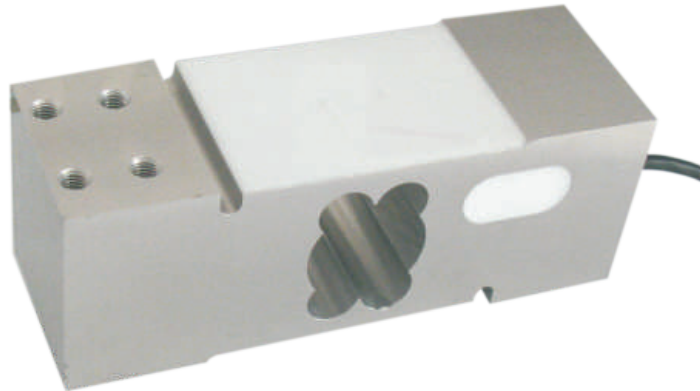




UDA Load cell

UDA



Platform scale, all kinds of compression testing devices

TECHNICAL PARAMETER

4Wires:Exc+(Red);Exc-(Black);Sig+(Green);Sig-(White)

Rated capacities(E _{max})	50,60,75,100,150,200,250,300, 350,500,600,635,750,800kg;1t	Temperature range, compensated	-10°C~+40°C
Sensitivity	2.0 ± 0.2mV/V	Temperature range, operating	-20°C~+50°C
Accuracy class	OIML C3	Maximum safe overload	150%E _{max}
Creep error (30min)	± 166ppm	Ultimate overload	300%E _{max}
Zero balance	± 3%E _{max}	Excitation, recommended	10V DC
TC ZERO	± 17.5ppm/°C	Excitation, maximum	15V DC
TC SPAN	+20°C~+40°C, ± 17.5ppm/°C -10°C~+20°C, ± 11.67ppm/°C	Protection class	IP65
Input resistance	404 ± 15Ω	Construction	Aluminium
Output resistance	350 ± 3Ω	Cable	Length: 1.8m
Insulation resistance	≥ 2000 MΩ (50V DC)	Installation torque, recommended	Diameter: φ 5mm
Max platform size	600 × 600mm		25N · m

Keli CEE

ul. Żółkiewskiego 3A, 4 piętro
63-400 Ostrow Wielkopolski

tel./fax. +48 62 592 42 78
e-mail: info@keli-cee.pl

www.keli-cee.pl