



WE WEIGH THE WORLD

Anyshop Scale

CL5200N SERIES



CL5200N-B

CL5200N-P

Anytime! Anywhere! Anyplace! Anyshop Scale

Achieved the strict European certification and OIML 2006, CL5200N is ideal for a variety of distribution markets at a reasonable price. Equipped with a large full-size graphic display, users can accurately check the results, and cartridge-type label makes it easy for anyone to replace the paper. By connecting USB memory, data backup, recovery and firmware updates are possible, resulting product maintenance and data management much easier.



Full Graphic LCD Display



Easy Loading Paper Cartridge



Direct PLU & Function Keys



USB Interface



CL5200N SERIES

Feature

Full Graphic LCD Display



The LCD display is used for displaying 4 digits of tare value, 5 digits of weight value, 6 digits of unit price and 7 digits of total price. And the dot matrix LCD display is used for displaying commodity name up to 12 characters.

Steady PLU keys

The embossing membrane keypad adds a steady look of CL5200N. Double-click function provides easy access to the key's secondary PLU, totaling in double of PLU key numbers.



Paper cartridge



Paper cartridge supports quick and easy replacement of new label roll.
- Various paper support
- Auto measuring system

High speed printer

Equipped with a high-speed thermal printer head, it supports printing speed of 100mm/sec and resolution of 202dpi. Labels are available in width 40~60mm, length 30~290mm.

Various interface connections

Powerful network systems can be built up through various interfaces which include USB, RS-232C, RJ11, and Ethernet. Also, data backup, recovery, and firmware updates are available via USB memory.



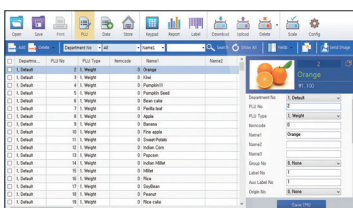
Memory expandable

10,000PLUS and 1,000 ingredients can be stored and further expansion is possible.



PC Software: CL-Works Pro

Users can setup the scale and manage data with CL-Works Pro. This program supports editing PLU, label format and keypad and much more.



PLU Editor

- Enable easy control, of PLU
- Allows PLUs management by excel



Label Editor

- 10 modifiable label formats
- Easy downloading of label formats

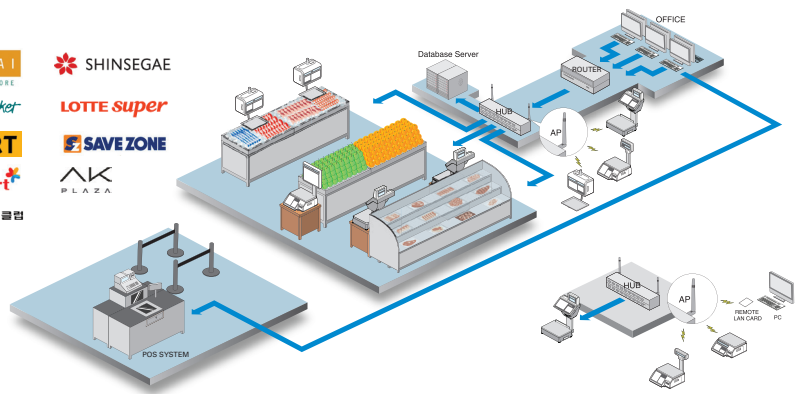


Keypad Editor

- Easy to setup and download
- Colored keypad image supported

Network System

- TCP/IP communication protocol
- IEEE802.11b/g/n specification wireless network
- Wireless security : WEP 64/128, WPA, WPA2
- One to one & multi to multi & wired/wireless network
- Network structure for
 - Large, medium and small independent markets
 - Pre-pack and self-service counter
 - Hyper market



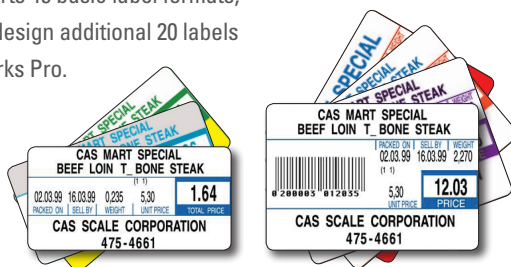
▲ Mixed with Wired / Wireless Network

▲ Multi to Multi

Software

Label Formats

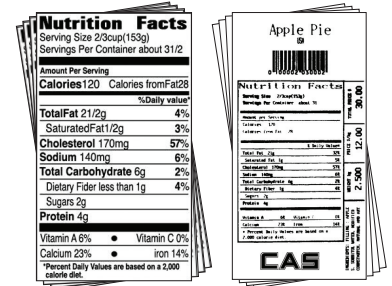
CL5200N supports 45 basic label formats, and users can design additional 20 labels through CL-Works Pro.



Barcode

Almost every conventional 1-Dimensional barcode types are available.

- UPC, EAN13, EAN13A5, I2OF5, CODE128, CODE39, CODE93, CODABAR, GS1 Databar, QR code, etc



Excellent Compatibility

- CL5200N series is fully compatible with CAS label printing scales.

CL3000 Series



CL3000-B

CL3000-P

CL7200 Series



CL7200-U

CL7200-S

CL7200-D

CL5500 Series



CL5500-B

CL5500-P

CL5500-R

CL5500-H

CL5500-S

Specification

MODEL	CL5200N	
Max.capacity(kg)	6/15	15/30
Readability(g)	2/5	5/10
External resolution	1/3,000(dual interval)	
Display digit	4 / 5 / 6 / 7 (tare / weight / unit / total)	
Display type	7 Segment LCD + Dot Matrix	
Printing speed	Max. 100 mm/sec	
Printer resolution	202 dpi	
Label size(mm)	Width: 40~60, Length: 30~290	
Power	AC 100~240V, 50/60 Hz	
Operating temperature	-10°C ~ +40°C	
Platter size(mm)	380(W)×250(D)	
Dimensions(mm)	B Type: 410(W)×441(D)×180(H) P Type: 410(W)×500(D)×535.8(H)	
Product weight(kg)	B Type: 6.95, P Type: 7.65	

Option

- PC management program (CL-Works Pro)

Dimension

